

CYLINDERS

BSUL SERIES ULTRA LOW HEIGHT HYDRAULIC CYLINDER

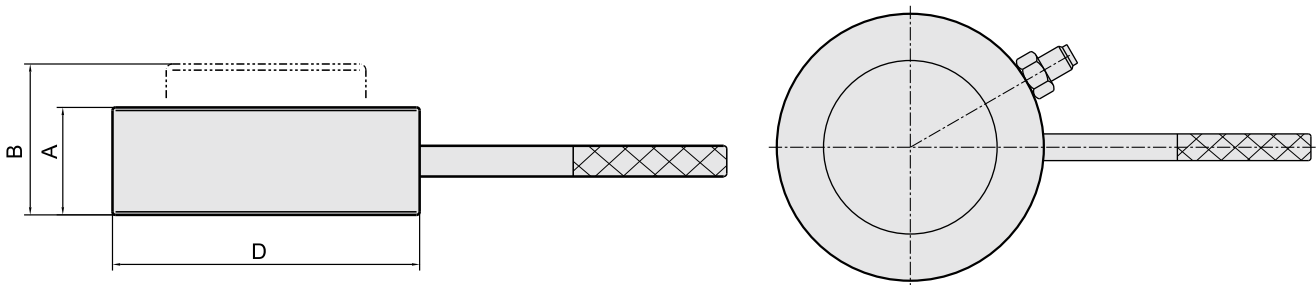
Capacity: 56-207T
 Max. Pressure: 1500 Bar
 Load Return

Safety Practices
 Good industry practice recommends not exceeding 80% of maximum rated capacities of all our products.



FEATURES AND BENEFITS

- Thin cylinder body, narrow space usage
- Cylinder, small size, light weight
- Cylinder are single acting, load return
- Cylinder surface after special treatment, suitable for harsh environments
- Cylinder are equipped with a G1/4" quick-change connectors, easy to use



Model	Cylinder Capacity @20,000 PSI (1500 bar)	Stroke mm	Oil Capacity cm ³	Collapsed Height	Extended Height	Outside Diameter mm	Balance Angle	Weight kg
	Metric Ton			A	B			
				mm	mm			
ESUL001	56	13	0.037	30	43	128	3	3
ESUL002	56	18	0.051	35	53	56	3	3.6
ESUL003	100	13	0.066	30	43	100	3	4
ESUL004	100	18	0.091	35	53	100	3	4.8
ESUL005	150	13	0.102	30	43	150	3	5.3
ESUL006	150	18	0.141	35	53	150	3	6.2
ESUL007	207	13	0.135	30	43	207	3	6.4
ESUL008	207	18	0.187	35	53	207	3	7.5